



WC14B

Industry Standards

UL 508, Types 12 & 13
CSA Certified, Type 12 & 13
NEMA/EEMAC Types 12 & 13

 UL Files E64791

 CSA File LL66078

FEATURES-SPECIFICATIONS

Applications

Designed to hold electrical and electronic controls and instruments. Pushbuttons, pilot lights, meters, switches etc., can be mounted on the instrument panel. Interior components are motorized on stationary sub panels, swing-out sub panels or relay rack angles (panels are optional). Heavy duty construction provides protection from dirt, dust, oil and water. Numerous accessories and variable combinations make these consoles most versatile.

Construction—Body

- Bodies and doors fabricated from 14 gauge steel
- Seams are continuously welded and ground smooth, less knockouts or holes
- 3-point keylocking handle is provided on front, main door
- Double overlapping doors are provided on two door consoles
- Main hinged doors are flush

- Grounding provisions provided
- One or two large sloping control panels are hinged on bottom
- Control panels have captivated screws which thread into sealed wells
- Door stops provided to hold control panel open
- Two print pockets are included
- Closed cell neoprene gasket is provided
- Horizontal channels are welded to sides of console to support **optional** panels, swing-out panels and rack mounting angles
- Half, full, and swing panels are **optional**

Construction—Top

- Fabricated from 14 gauge steel
- Top unit is 12.50" deep to accommodate most instruments
- Seams are continuously welded and ground smooth, less knockouts or holes

- Instrument and access panels have captivated screws which thread into sealed wells
- 4 holes are provided in bottom of top for mounting to body
- Instrument and access panels are removable
- Closed cell neoprene gasket

Construction—Writing Desk

- Fabricated from 14 gauge steel
- Seams are continuously welded and ground smooth
- Desks are removable and attach easily to console front

Finish

- ANSI 61 gray polyester powder inside and out over phosphatized surfaces
- **Optional** panels are white polyester powder over phosphatized surfaces

Accessories

- See pages J1-J19

WC14 SERIES OPERATOR INTERFACE CONSOLES								
CATALOG NUMBER CONSOLE ONLY	CONSOLE WIDTH	CATALOG NUMBER			PANEL SIZES H X W	CATALOG NUMBER		
		CONSOLE TOP	WRITING DESK	VARIOUS PANEL*		CASTER KIT	CLAMPING NUTS	RACK ANGLES
WC14B (Single door)	24.00" (610)	WC14T	WC14W	WC14P1 (Swing panel)	22.00x18.13 (559x461)	WC12C	WAPS1420CN	WC14R
—	—	—	—	WC14P2 (Half panel)	22.00x17.00 (559x432)	—	—	—
—	—	—	—	WC14P3 (Full panel)	42.25x17.00 (1073x432)	—	WAPS3816CN	—
WC1436B (Single door)	36.00" (914)	WC1436T	WC1436W	WC1436P1 (Swing panel)	22.00x30.13 (559x765)	WC12C	WAPS1420CN	—
—	—	—	—	WC1436P2 (Half panel)	22.00x29.00 (559x737)	—	—	—
—	—	—	—	WC1436P3 (Full panel)	42.25x29.00 (1073x737)	—	WAPS3816CN	—
WC1448BD (Double door)	48.00" (1219)	WC1448T	WC1448W	WC1448P2 (Half panel)	22.00x41.00 (559x1041)	WC12C	WAPS1420CN	—
—	—	—	—	WC1448P3 (Full panel)	42.25x41.00 (1073x1041)	—	WAPS3816CN	—
WC1460BD (Double door)	60.00" (1524)	WC1460T	WC1460W	WC1460P2 (Half panel)	22.00x53.00 (559x1346)	WC12C	WAPS1420CN	—
—	—	—	—	WC1460P3 (Full panel)	42.25x53.00 (1073x1346)	—	WAPS3816CN	—

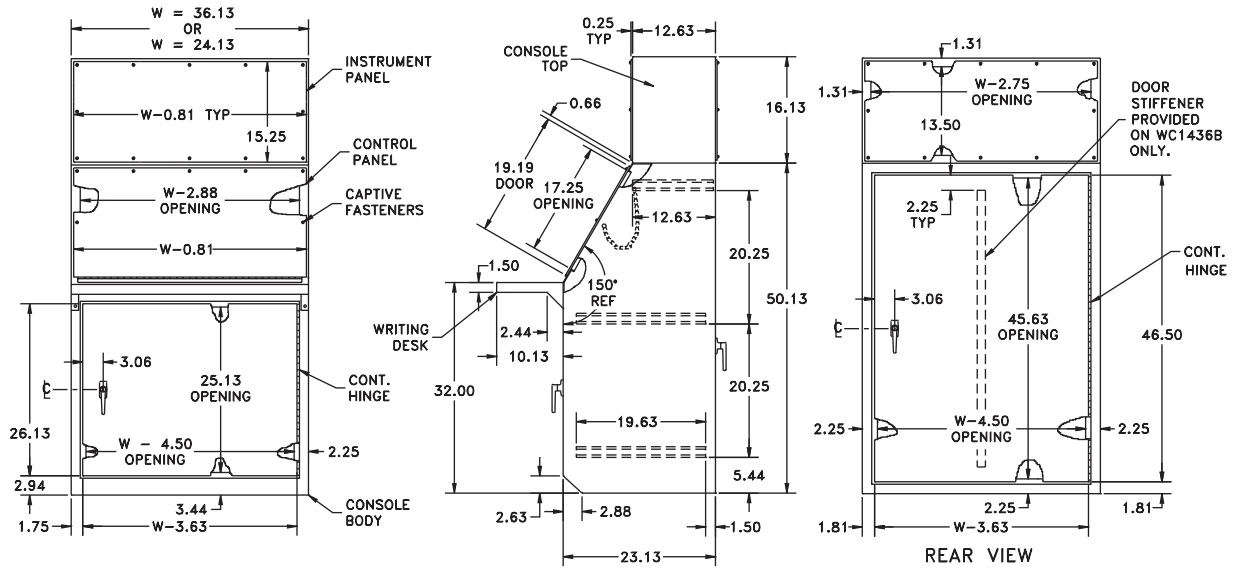
*Full, Half, and Swing panels must be ordered separately.



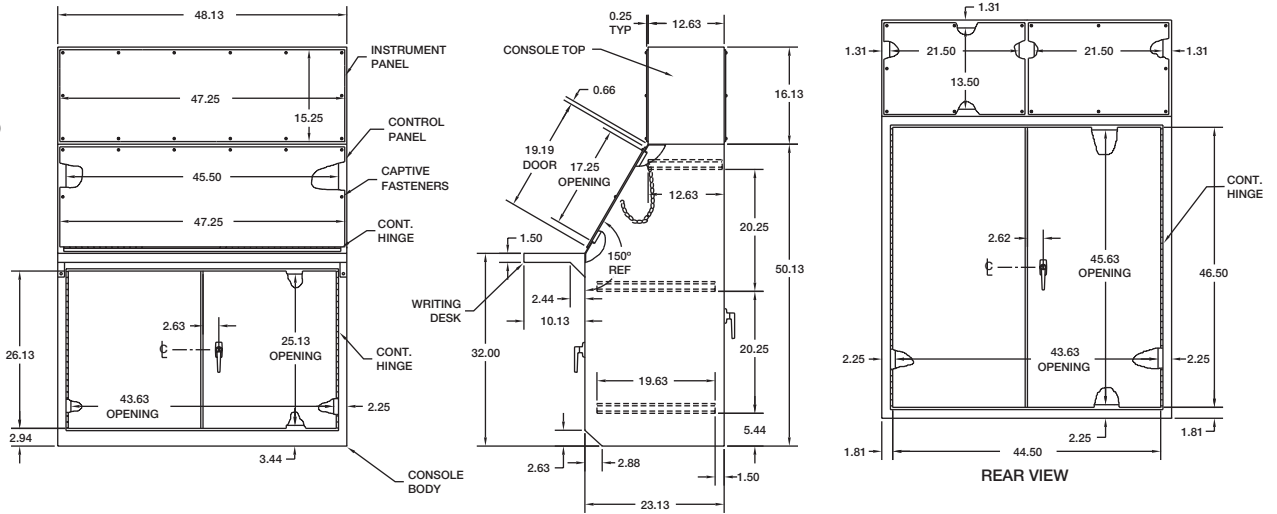
WC14 SERIES CONSOLES NEMA 12 OPERATOR INTERFACE

H11

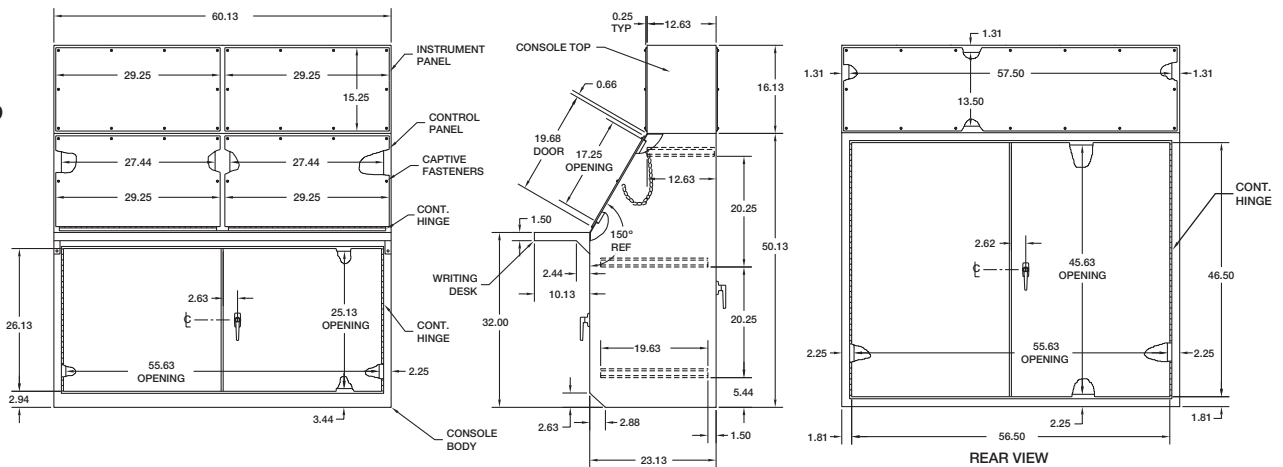
**WC14B and
WC1436B**



WC1448BD



WC1460BD



Notes:

1. Access doors open 180 degrees.
2. Two 8X10 Print Pockets are provided.
3. 3-point key-locking handles are provided on access doors.
4. Writing desk is provided with mounting hardware.

